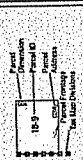




Parcel Atlas
April, 2014



- Parcel Lines
- Parcel ID
- Parcel Area
- Parcel Perimeter
- Parcel Elevation
- Parcel Volume
- Parcel Area
- Parcel Perimeter
- Parcel Elevation
- Parcel Volume

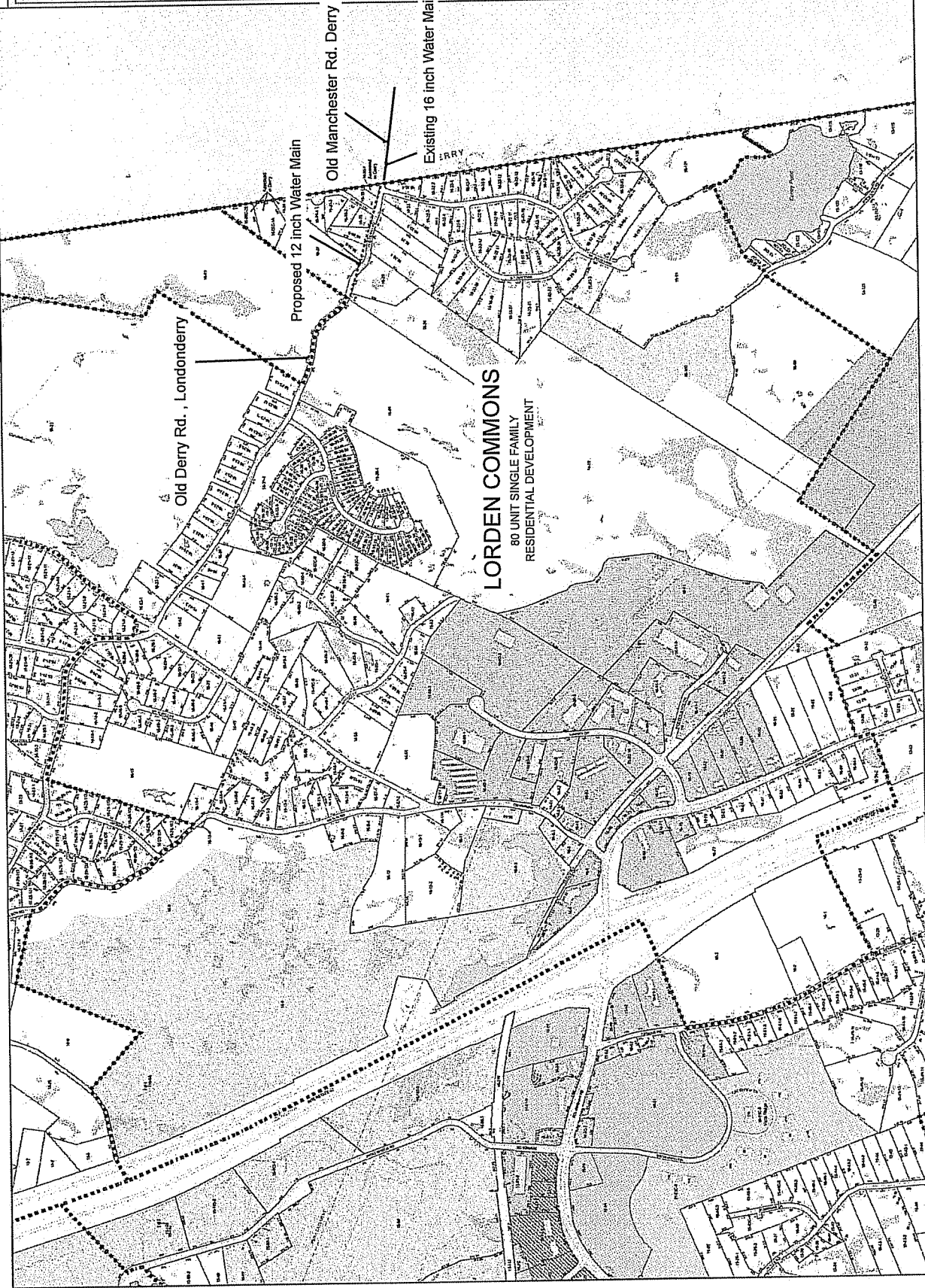
Zoning Districts

- Residential Single-Family (RS)
- Residential Two-Family (RTF)
- Residential Medium-Density (RMD)
- Residential High-Density (RHD)
- Commercial (C)
- Industrial (I)
- Office (O)
- Public Use (PU)
- Special Use (SU)
- Agricultural (A)
- Forest (F)
- Wetlands (W)
- Flood (FL)
- Other (OT)



Tax Map
016

Scale: 1 inch = 100 feet
 Date: 11/15/13
 Prepared by: [Name]
 Checked by: [Name]



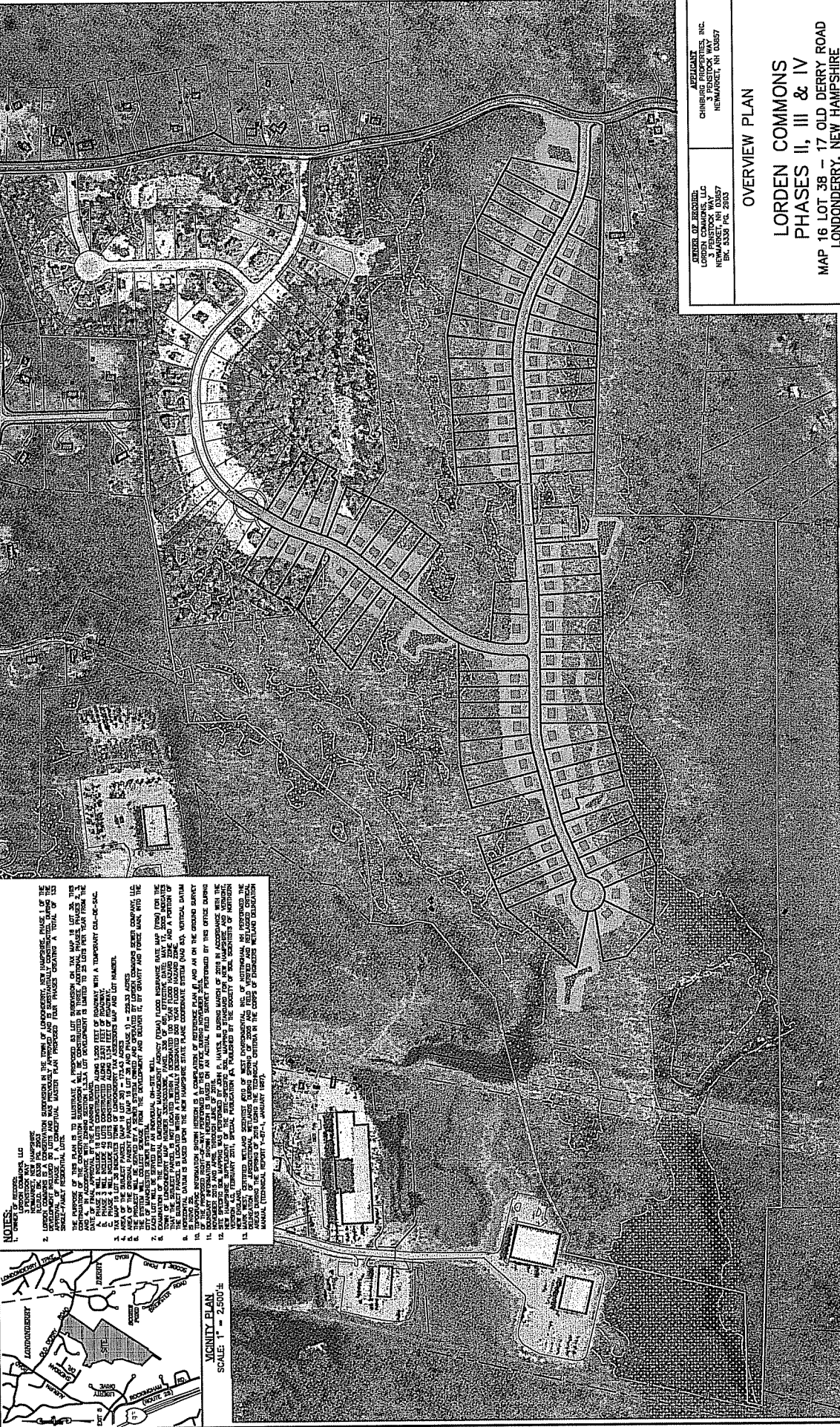
LORDEEN COMMONS
80 UNIT SINGLE FAMILY
RESIDENTIAL DEVELOPMENT

Old Derry Rd., Londonderry

Proposed 12 inch Water Main

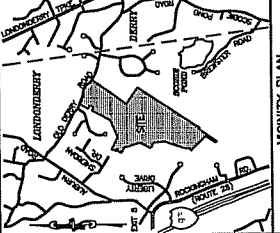
Old Manchester Rd. Derry

Existing 16 inch Water Main



NOTES:

1. OWNER: LORDEN COMMONS, LLC
2. PROJECT: LORDEN COMMONS, PHASES II, III & IV
3. LOCATION: 16 LOT 38 - 17 OLD DERRY ROAD, LONDONDERRY, NEW HAMPSHIRE
4. THE PURPOSE OF THIS PLAN IS TO SUBMIT THE PROPOSED DEVELOPMENT TO THE TOWN OF LONDONDERRY, NEW HAMPSHIRE, FOR REVIEW AND APPROVAL.
5. THE DEVELOPMENT IS A RESIDENTIAL DEVELOPMENT CONSISTING OF 16 LOTS, 16 HOUSES, AND 16 GARAGES.
6. THE DEVELOPMENT IS A RESIDENTIAL DEVELOPMENT CONSISTING OF 16 LOTS, 16 HOUSES, AND 16 GARAGES.
7. THE DEVELOPMENT IS A RESIDENTIAL DEVELOPMENT CONSISTING OF 16 LOTS, 16 HOUSES, AND 16 GARAGES.
8. THE DEVELOPMENT IS A RESIDENTIAL DEVELOPMENT CONSISTING OF 16 LOTS, 16 HOUSES, AND 16 GARAGES.
9. THE DEVELOPMENT IS A RESIDENTIAL DEVELOPMENT CONSISTING OF 16 LOTS, 16 HOUSES, AND 16 GARAGES.
10. THE DEVELOPMENT IS A RESIDENTIAL DEVELOPMENT CONSISTING OF 16 LOTS, 16 HOUSES, AND 16 GARAGES.
11. THE DEVELOPMENT IS A RESIDENTIAL DEVELOPMENT CONSISTING OF 16 LOTS, 16 HOUSES, AND 16 GARAGES.
12. THE DEVELOPMENT IS A RESIDENTIAL DEVELOPMENT CONSISTING OF 16 LOTS, 16 HOUSES, AND 16 GARAGES.
13. THE DEVELOPMENT IS A RESIDENTIAL DEVELOPMENT CONSISTING OF 16 LOTS, 16 HOUSES, AND 16 GARAGES.
14. THE DEVELOPMENT IS A RESIDENTIAL DEVELOPMENT CONSISTING OF 16 LOTS, 16 HOUSES, AND 16 GARAGES.
15. THE DEVELOPMENT IS A RESIDENTIAL DEVELOPMENT CONSISTING OF 16 LOTS, 16 HOUSES, AND 16 GARAGES.
16. THE DEVELOPMENT IS A RESIDENTIAL DEVELOPMENT CONSISTING OF 16 LOTS, 16 HOUSES, AND 16 GARAGES.



ORDER OF RECORD:
LORDEN COMMONS, LLC
3 FRANKLIN WAY
NEW HAMPSHIRE, NH 03057

ATTORNEY:
CHANDLER & ASSOCIATES, INC.
3 FRANKLIN WAY
NEW HAMPSHIRE, NH 03057

OVERVIEW PLAN

LORDEN COMMONS
PHASES II, III & IV
MAP 16 LOT 38 - 17 OLD DERRY ROAD
LONDONDERRY, NEW HAMPSHIRE

FORM. NO. 15-0904-2
DATE: JULY 15, 2016
SCALE: 1" = 200'
FILE NO.:
SHEET NO. 1 OF 71

KM
KIMMEL-VERBEEK ASSOCIATES, INC.
Civil Engineering Land Surveying Landscape Architecture
14 Commercial Park North, Suite 100, Londonderry, NH 03057

LEGEND

- ADJACENT PROPERTY LINE
- WETLAND
- EDGE OF PAVEMENT
- EXISTING EASEMENT
- EXISTING ZONE X
- ZONE LINE
- PROPOSED PROPERTY LINE

GRAPHIC SCALE
1 inch = 200 ft.
(OR FEET)