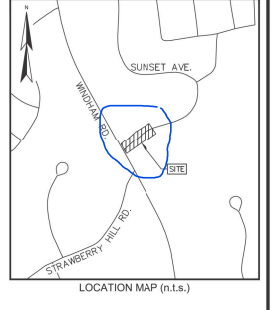
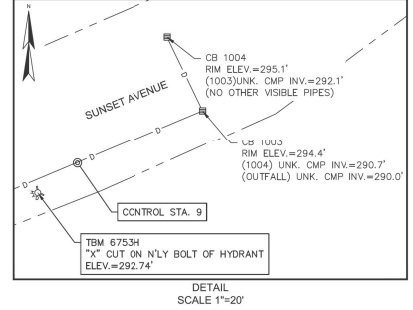
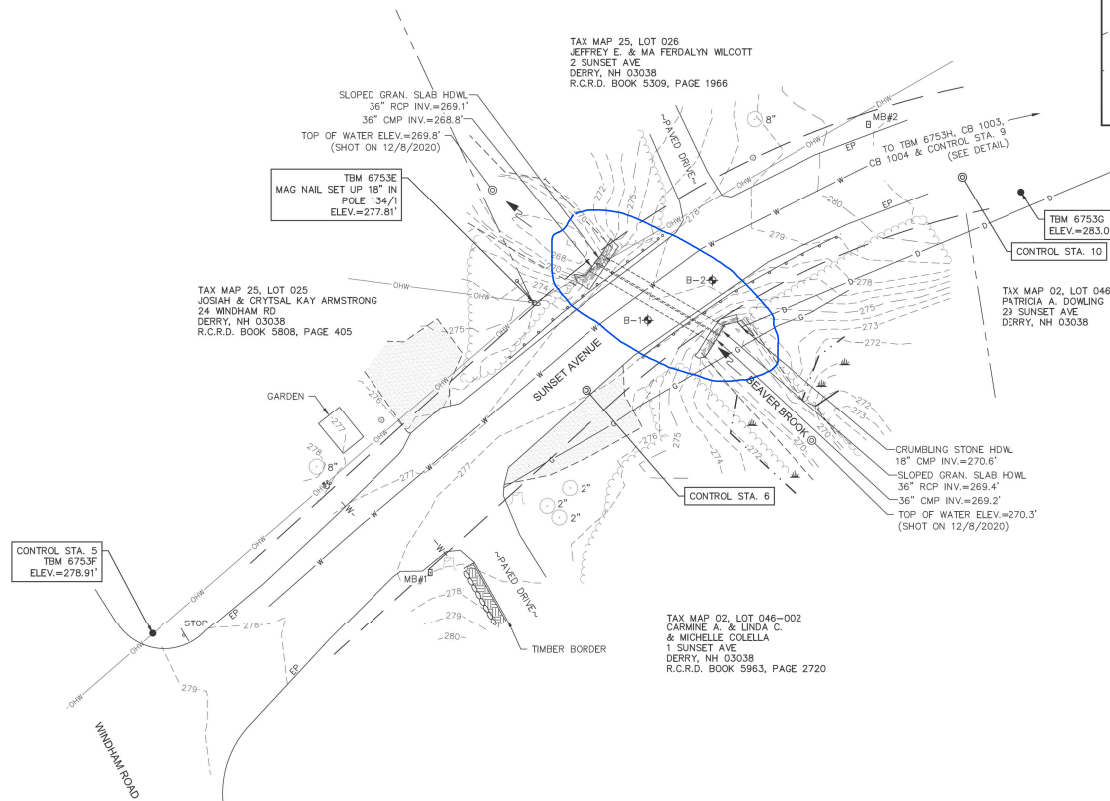


SUNSET AVENUE CULVERT #2 SEPT 2024 - NOVEMBER 2024



- LEGEND**
- APPROXIMATE RIGHT-OF-WAY LINE (SEE NOTE 10)
 - - - APPROXIMATE ADJUTERS LOT LINE
 - STONE WALL
 - GUARDRAIL
 - OVERHEAD WIRE
 - GAS LINE
 - WATER LINE
 - MAJOR CONTOUR LINE
 - MINOR CONTOUR LINE
 - TREE LINE
 - EDGE OF WETLAND (SEE NOTE 5)
 - TOP OF BANK/ORDINARY HIGH WATER LINE (SEE NOTE 5)
 - WETLAND AREA
 - CRUSHED STONE
 - LANDSCAPED AREA
 - UTILITY POLE & GUY WIRE
 - SON
 - 5/8" REBAR #/D CAP SET
 - FIRE HYDRANT
 - WATER SHUTOFF VALVE
 - CATCH BASIN
 - DECIDUOUS TREE
 - CONIFEROUS SHRUB
 - TREE STUMP
 - BORING LOCATION
 - GRANITE
 - HEADWALL
 - EP
 - MB
 - MALBOX
 - R.C.R.D.
 - ROOKINGHAM COUNTY REGISTRY OF DEEDS



EXISTING CONDITIONS PLAN
FOR
HOYLE, TANNER & ASSOCIATES, INC
OF
SOUTHERN BEAVER BROOK CULVERT
SUNSET AVENUE
DERRY, NEW HAMPSHIRE

NO.	DATE	DESCRIPTION	BY

DRAWN BY:	B.T.	DATE:	DECEMBER 2020
CHECKED BY:	W.J.D.	DRAWING NO.:	6753B
JOB NO.:	6753	SHEET:	7 OF 27

- NOTES:**
- REFERENCE: BEAVER BROOK CULVERT SUNSET AVENUE DERRY, NH D.S. PROJECT NO. 6753
 - FIELD SURVEY PERFORMED BY DOUCET SURVEY DURING DECEMBER 2020 USING A TRIMBLE S7 TOTAL STATION AND A SURVEY GRADE GPS WITH A TRIMBLE TSC3 DATA COLLECTOR AND A TRIMBLE DNI DIGITAL AUTO LEVEL. TRANSVERSE ADJUSTMENT BASED ON LEAST SQUARES ANALYSIS.
 - HORIZONTAL DATUM BASED ON NAD83(2011) NEW HAMPSHIRE STATE PLANE COORDINATE ZONE (2800) DERIVED FROM REDUNDANT GPS OBSERVATIONS UTILIZING THE KEYNET GPS VRS NETWORK.
 - VERTICAL DATUM IS BASED ON APPROXIMATE NAVD83(GEOD18) (±2') DERIVED FROM REDUNDANT GPS OBSERVATIONS UTILIZING THE KEYNET GPS VRS NETWORK.
 - JOANNE THERIAULT, CERTIFIED WETLAND SCIENTIST NO. 305 FROM HOYLE, TANNER & ASSOCIATES, INC. OF MANCHESTER, NH, PERFORMED THE WETLAND MAPPING ON OCTOBER 4, 2020 ACCORDING TO THE CORPS OF ENGINEERS WETLAND DELINEATION MANUAL (1987) REGIONAL SUPPLEMENT TO THE CORPS OF ENGINEERS WETLAND DELINEATION MANUAL NORTH-CENTRAL AND NORTHEAST REGION (VERSION 2.0, 2012), US ARMY CORPS OF ENGINEERS.
 - FRESH FIELD MEASUREMENTS WERE FOLLOWED IN ORDER TO DEMONSTRATE CONTIGUOUS AT 1' INTERVALS. ANY MODIFICATION OF THIS INTERVAL WILL DIMINISH THE INTEGRITY OF THE DATA, AND DOUCET SURVEY WILL NOT BE RESPONSIBLE FOR ANY SUCH ALTERATION PERFORMED BY THE USER.

- UNDERGROUND UTILITIES SHOWN HEREON ARE BASED ON OBSERVED PHYSICAL EVIDENCE AND PAINT MARKS FOUND ON-SITE.
- ALL UNDERGROUND UTILITIES (ELECTRIC, GAS, TEL, WATER, SEWER DRAIN SERVICES) ARE SHOWN IN SCHEMATIC FASHION. THEIR LOCATIONS ARE NOT PRECISE OR NECESSARILY ACCURATE. NO WORK WHATSOEVER SHALL BE UNDERTAKEN USING THIS PLAN TO LOCATE THE ABOVE SERVICES. CONSULT WITH THE PROPER AUTHORITIES CONCERNED WITH THE SUBJECT SERVICE LOCATIONS FOR INFORMATION REGARDING SUCH. CALL DIG-SAFE AT 1-888-DIG-SAFE.
- THE ACCURACY OF MEASURED UTILITY INVERTS AND PIPE SIZES/TYPES IS SUBJECT TO NUMEROUS FIELD CONDITIONS, INCLUDING THE ABILITY TO MAKE VISUAL OBSERVATIONS, DIRECT ACCESS TO THE VARIOUS ELEMENTS, MANHOLE CONFIGURATION, ETC.
- THE SUNSET AVENUE RIGHT-OF-WAY SHOWN HEREON IS APPROXIMATE REFERENCE PLAN 1 AND DEED RECORDS INDICATE THE RIGHT-OF-WAY TO BE 40' IN WIDTH. NO MONUMENTATION WAS FOUND ALONG THE EDGES OF SAID RIGHT OF WAY. THE RIGHT OF WAY GEOMETRY IS PER REFERENCE PLAN 1 CENTERED ON THE EXISTING ROADWAY.
- THIS SURVEY WAS PERFORMED IN WINTER CONDITIONS WITH SNOW COVER ON THE GROUND. A SITE CHECK IS RECOMMENDED IN THE SPRING IN ORDER TO ENSURE THE COMPLETENESS & ACCURACY OF THE INFORMATION SHOWN HEREON.

REFERENCE PLANS:

- "SUBDIVISION SUNSET ACRES - DERRY, N.H. SUNSET CORPORATION OWNERS" DATED AUG. 1958 BY FRED N. SCHIRNER R.C.R.D. PLAN 02675.

CONTROL DATA

CONTROL POINT	DESCRIPTION	NORTHING	EASTING	ELEVATION
5	REBAR W/CAP	134473.662	1079403.194	278.91
6	MAG NAIL	134552.049	1079243.032	277.06
9	WAS NAIL	134674.005	1079263.319	292.10
10	MAG NAIL	134620.588	1079663.696	282.25



DOUCET SURVEY
Serving Your Professional Surveying & Mapping Needs
102 Kent Plaza, Newburyport, NH 03857 (603) 659-6560
2 Commerce Drive (Suite 202) Bedford, NH 03110 (603) 614-4060
10 Stoner Street (Riverview Suite) Kennebunk, ME (207) 502-7005
<http://www.doucetsurvey.com>