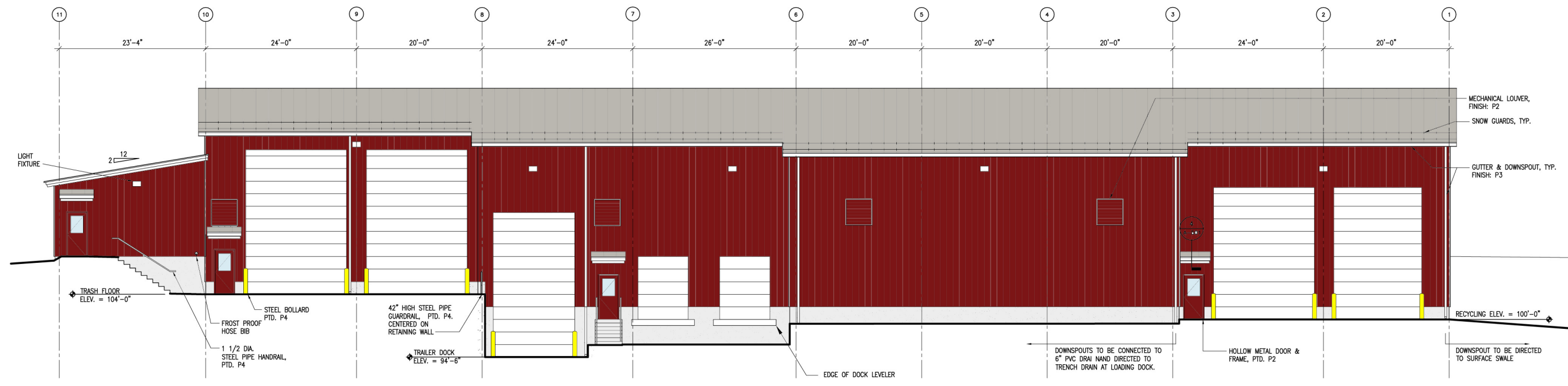


**2 NORTH ELEVATION**  
A-101 1/8" = 1'-0"



**1 EAST ELEVATION**  
A-101 1/8" = 1'-0"

|     |          |      |    |
|-----|----------|------|----|
| no. | revision | date | by |
|     |          |      |    |

Design-Build General Contractor  
**HUTTER**  
 Hutter Construction Corporation  
 New Ipswich, New Hampshire

**CMA**  
 ENGINEERS  
 CIVIL/ENVIRONMENTAL ENGINEERS  
 Portsmouth, NH Manchester, NH Portland, ME  
**Robert E. Doyle PE RA**  
 603.738.2872  
 22 West Concord Street  
 Dover, NH 03820  
 rdoyle@cmains.com

|              |            |              |     |
|--------------|------------|--------------|-----|
| date:        | March 2015 | designed by: | RED |
| project no.: | 0039       | drawn by:    | RED |
| file name:   |            | approved by: | RED |
| scale:       | AS NOTED   |              |     |

Town of Derry, NH  
 Department of Public Works  
 Transfer Station & Recycling Facility  
 Construction Drawings  
 Exterior Elevations

drawing no.  
**A-302**  
 sheet: 007 of 013